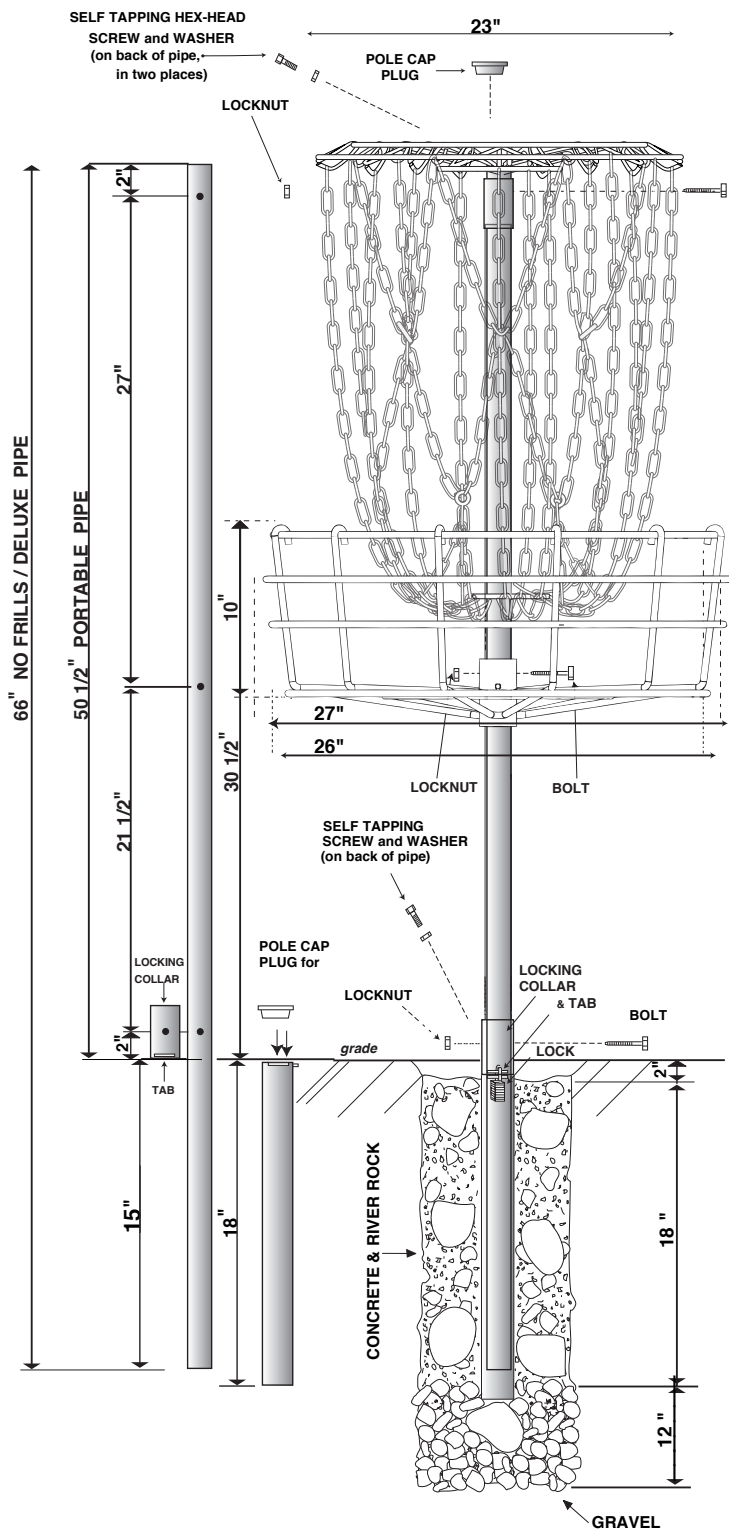


DGA MACH X™ PERMANENT DISC GOLF BASKET SPECIFICATION SHEET

The Mach X Disc Golf Basket is the ultimate professional level target and sets the standard for top tier disc golf tournaments.



POLE (66 in.) - 1 1/2 in. I.D., 1 15/16 in. O.D. hot-dipped galvanized pipe, drilled.

POLES - The holes closest to one end of the pole are for the Chain Assembly. This end should also have a red Pole Cap Plug. The middle set of holes are for the Basket Assembly. The bottom set of holes are for the Locking Collar (Deluxe Disc Pole Hole model only).

CHAIN ASSEMBLY - Welded and hot-dipped galvanized. 16 outer sliding links and strands chains, 8 midway reflex chains, 16 X-pattern inner chains. All 40 chains assembled with heavy duty stainless steel "S" hooks to allow freer movement of chains. 6" Sleeve - Bolt, hex head nut and nylon insert locknut, hex head tec screw, internal tooth star lock washer.

CHAIN ASSEMBLY INSTRUCTIONS - Slide Chain Assembly, (ring first), down pole. Align holes in collar with holes at top of pole. Fasten with bolt, hex head nut and nylon insert locknut, hex head tec screw, internal tooth star lock washer.

TRAPPER BASKET 2 ASSEMBLY - 3/8 inch steel rod, welded and hot-dipped galvanized. 6" Sleeve - bolt, hex head nut and nylon insert locknut, hex head tec screw, internal tooth star lock washer.

TRAPPER BASKET 2 ASSEMBLY INSTRUCTIONS - Slide Basket Assembly down pole, (basket facing up), until holes in collar align with holes in middle of pole. Fasten with bolt, hex head nut and nylon insert locknut, hex head tec screw, internal tooth star lock washer.

*ANCHOR & COLLAR (Deluxe mounting option only)

LOCKING COLLAR - Welded and hot-dipped galvanized. 4" Collar- 2 1/8" Tubing. Bolt, hex head nut and nylon insert locknut, hex head tec screw, internal tooth star lock washer.

LOCKING COLLAR ASSEMBLY INSTRUCTIONS - Slide the locking collar, with the locking tab at the bottom of collar, up pole to bottom set of holes. Align holes in locking collar with holes in pole and fasten with bolt, hex head nut and nylon insert locknut, hex head tec screw, internal tooth star lock washer. After the locking collar is fastened, the pole can be placed in anchor to complete installation.

*Note: The LOCKING TAB should always be pointing at the tee.

ANCHOR - 18 in. x 2 1/8 in. O.D. pipe, drilled. Install flush to ground with matching Locking Tab aiming at the tee.

CONCRETE & RIVER ROCK (Used to stabilize Anchor until cement sets) - Approximately 1 cubic foot (concrete, river rock and lock not furnished)

CAUTION: Let concrete settle and cure 1 week before installing basket.



DGA | The Founding Company of Disc Golf
DiscGolf.com 831-722-6037