

DGA MACH 2™ PERMANENT DISC GOLF BASKET SPECIFICATION SHEET

The Mach II Permanent Disc Pole Hole disc golf basket is an excellent portable target for home, schools, colleges or any recreational setting. With the inground installation kit the Mach II is also perfect for entry level disc golf courses.

PORTABLE BASE - 3/8" steel rod, welded and hot-dipped galvanized. 6" Sleeve, bolt, nylon insert locknut and hex head tec screw.

PORTABLE BASE ASSEMBLY INSTRUCTIONS - Place the base on level ground and insert the short pole into the base with the swaged end facing up. Line up the pole's three bottom bolt holes with the three bolt holes on the base. Push a long bolt through both the base and pole bolt holes and tighten with a locking nut.

POLE (50 1/2" total length) - Two 1 1/2" I.D., 1 15/16" O.D. hot-dipped galvanized pipe, drilled. One long pole with cap, one swaged short pole

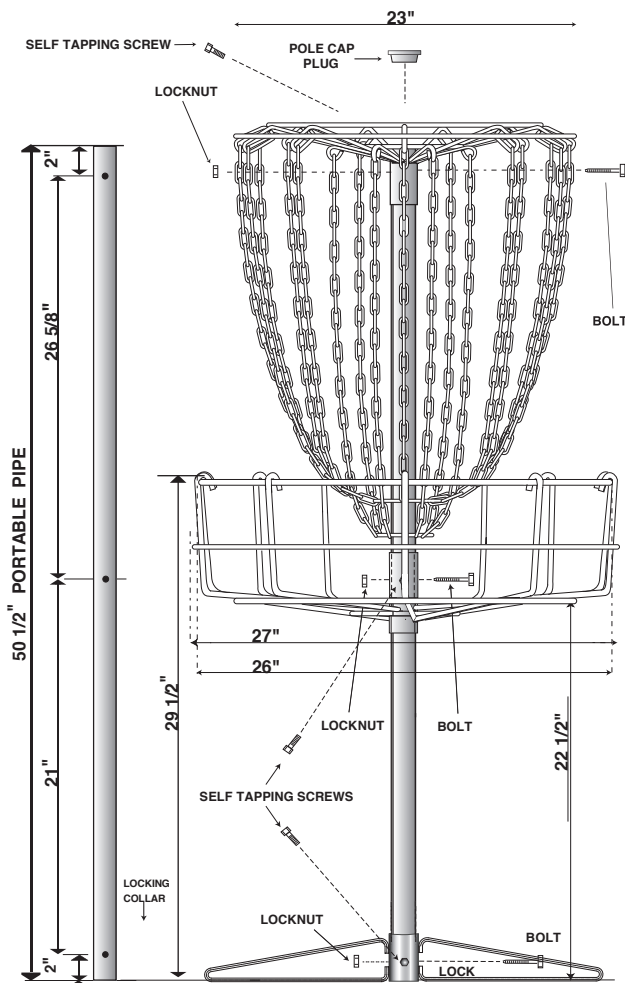
POLES - The short pole fits into the base with the swaged end facing up. The longer pole with the cap side up fits onto the short pole's swaged end. The bolt holes on both poles line up and attach with the basket.

TRAPPER BASKET ASSEMBLY - 3/8" steel rod, welded and hot-dipped galvanized. 6" Sleeve, bolt, hex head nut, nylon insert locknut and hex head tec screw.

TRAPPER BASKET ASSEMBLY INSTRUCTIONS - Lift the trapper basket up onto the top of the pole. Slide the trapper basket down past the middle of the pole and line up the three trapper basket bolt holes with the holes on the poles. Push a long bolt through the trapper basket and the pole's bolt holes. Tighten the long bolt with a locking nut.

CHAIN ASSEMBLY - Welded and hot-dipped galvanized. 12 outer sliding links and chains, 6 inner pipe protectors and chains. All 18 chains assembled with heavy duty "S" hooks to allow freer movement of chains. 6" Sleeve, bolt, hex head nut, nylon insert locknut and hex head tec screw. Rod Assembly - 3/8" steel rod.

CHAIN ASSEMBLY INSTRUCTIONS - Slide Chain Assembly, (ring first), down pole. Align holes in collar with holes at top of pole. Fasten with bolt and nylon insert locknut

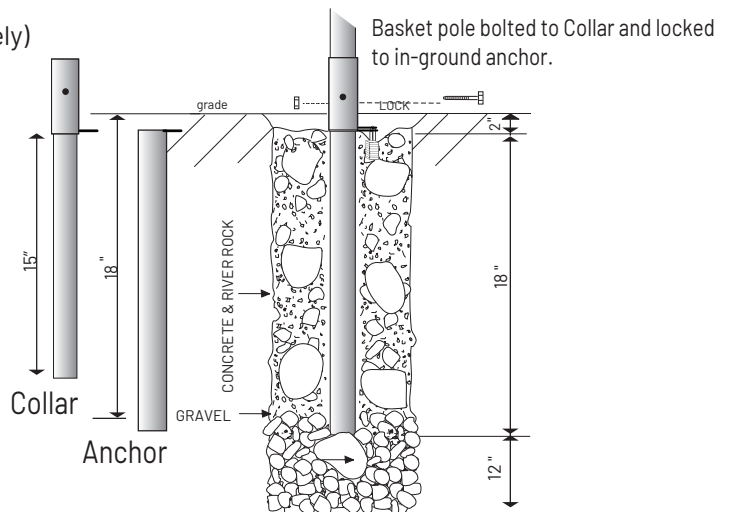


IN-GROUND INSTALLATION KIT (Sold Separately)

With the locking tab towards top of collar align holes in locking collar with holes in pole and fasten with bolt, head nut and nylon insert locknut.

Once fastened, the pole can be placed and locked in anchor.

***Note:** The LOCKING TAB should always be pointing at the tee.





DGA MACH 2™ PERMANENT DISC GOLF BASKET ASSEMBLY INSTRUCTIONS

Box includes: 1 base, 1 trapper basket, 1 chain holder, 1 long pole with cap, 1 swedged short pole, 3 long bolts (11mm), 3 locking nuts (11mm), 3 short bolts (10mm) and 1 focal point sticker.
You will need 10mm and 11mm wrenches or ratchets to tighten the bolts.

- 1) Remove all parts from inside the box. Place the base on level ground and insert the short pole into the base with the swedged end facing up. Line up the poles three bottom bolt holes with the three bolt holes on the base. Push a long bolt through both the base and pole bolt holes and tighten with a locking nut.
- 2) Place the longer pole with the cap side up onto the short pole's swedged end and line up the three bolt holes on both poles. Lift the trapper basket up onto the top of the pole. Slide the trapper basket down past the middle of the pole and line up the three trapper basket bolt holes with the holes on the poles. Push a long bolt through the trapper basket and the pole's bolt holes. Tighten the long bolt with a locking nut.
- 3) Lift the chain holder up onto the top of the pole by first feeding the two 4 inch rings that connect to the bottom of the chain strands. Line up the three bolt holes on the chain holder and the poles top three bolt holes and push a long bolt through the chain holder and pole bolt holes. Tighten the long bolt with a locking nut.
- 4) The base, trapper basket and chain holder each have one remaining hole for the 10mm short bolts. In each of the remaining holes insert and tighten a short bolt to prevent the base, trapper basket and chain holder from wobbling on the pole.
- 5) Attach the included focal point sticker so that the top of the sticker is about five inches from the top of the pole. Start with lining up one end of the sticker so it is straight up and down in line with the pole and slowly wrap the focal point sticker around the pole. The Mach 2 logo should be facing side ways on the pole.

